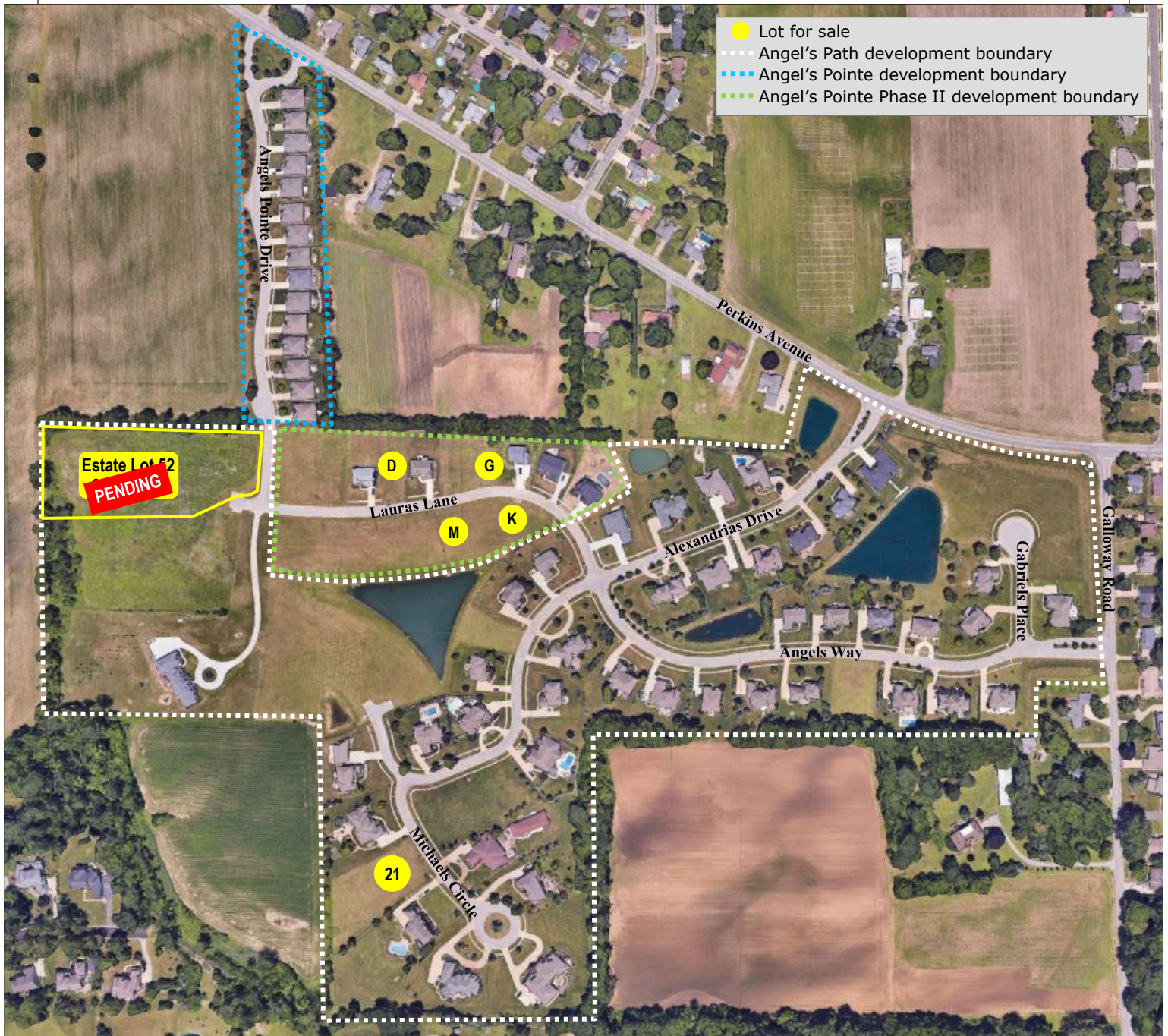


# Angel's Path | Angel's Pointe

Premier Residential Communities in Perkins Township, Ohio



- Lots and luxury homes for sale
- Architectural standards to protect your investment
- Perkins Township Schools
- Convenient access to highways
- Minutes from Osborn Park, Plum Brook Country Club and US 250 shopping and restaurant district

Developed by



Kula Hoty Lynch  
419.609.7000  
kula@hoty.com

# Angel's Path | Angel's Pointe

Premier Residential Communities in Perkins Township, Ohio

## Angel's Path

- Lots starting at 0.38 acre
- Distinctive homes
- Water views & beautiful common areas

### Available Properties

<u>Lot #</u>	<u>Lot Acreage</u>	<u>Min. Sq. Ft. Home Size</u>	<u>List Price</u>
21	1.04	3,600	\$199,000
52	3.20	3,600	<i>IN CONTRACT</i>



## Angel's Pointe

- 15 luxury sites along an intimate avenue
- One 2,484 sq. ft. home plan
- Decorative & upgrade options available

### Available Properties

<u>Lot #</u>	<u>List Price</u>
<i>SOLD OUT</i>	



## Angel's Pointe Phase II

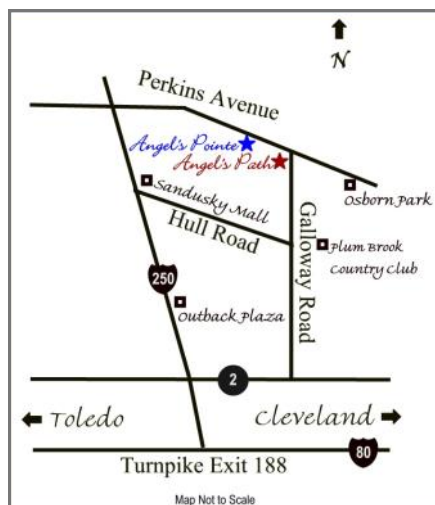
- Lots starting at 0.33 acre
- Minimum home size of 2,400 sq. ft.
- Private atmosphere

### Available Properties

<u>Lot #</u>	<u>Lot Acreage</u>	<u>Min. Sq. Ft. Home Size</u>	<u>List Price</u>
D	0.33	2,400	\$64,900
G	±0.33	2,400	\$69,900
K	0.45	2,800	\$74,900
M	0.40	2,800	\$99,000



Kula Hoty Lynch  
419.609.7000  
kula@hoty.com



Prices are subject to change without notice. Contact Hoty Enterprises for current prices and incentives. Principals of owners are licensed agents.