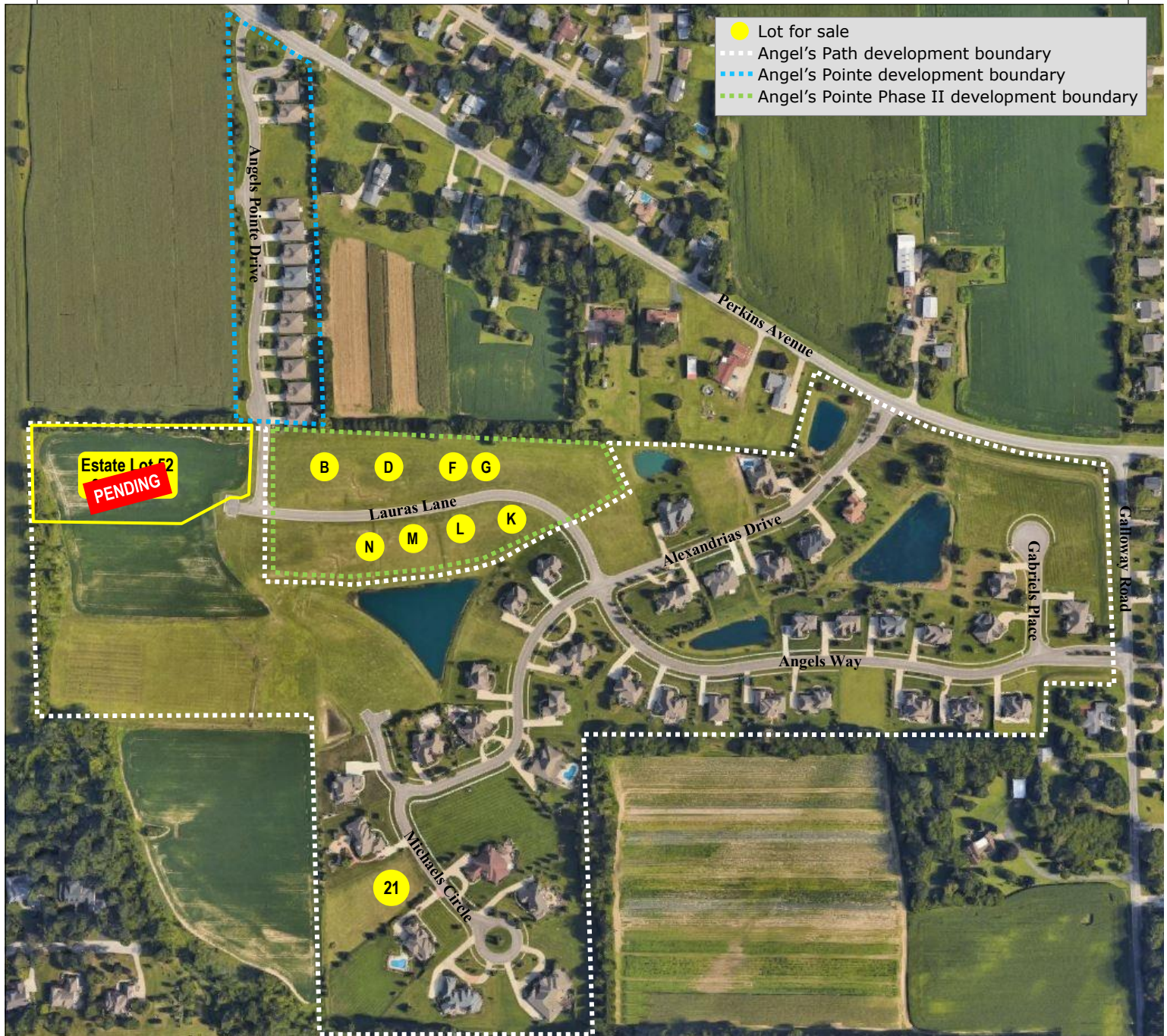


Angel's Path | Angel's Pointe

Premier Residential Communities in Perkins Township, Ohio



- Lots and luxury homes for sale
- Architectural standards to protect your investment
- Perkins Township Schools
- Convenient access to highways
- Minutes from Osborn Park, Plum Brook Country Club and US 250 shopping and restaurant district

Developed by



Kula Hoty Lynch
419.609.7000
kula@hoty.com

Angel's Path | Angel's Pointe

Premier Residential Communities in Perkins Township, Ohio



Angel's Path

- Lots starting at 0.45 acre
- Distinctive homes
- Water views & beautiful common areas

Available Properties

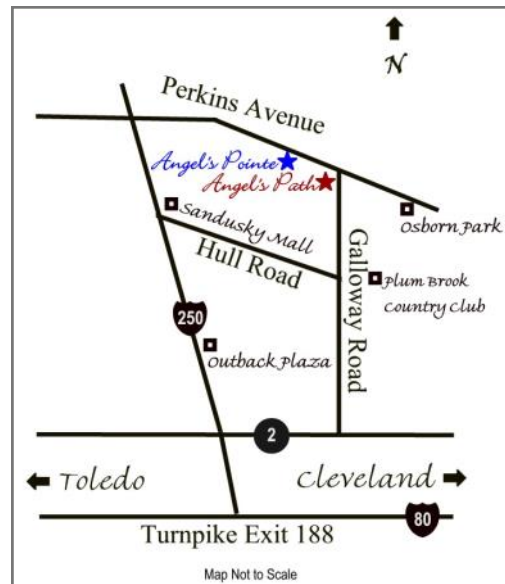
<u>Lot #</u>	<u>Lot Acreage</u>	<u>Min. Sq. Ft. Home Size</u>	<u>List Price</u>
21	1.04	3,600	\$179,000
52		IN CONTRACT	

Angel's Pointe Phase II

- Lots starting at 0.33 acre
- Minimum home size of 2,400 sq. ft.
- Private atmosphere

Available Properties

<u>Lot #</u>	<u>Lot Acreage</u>	<u>Min. Sq. Ft. Home Size</u>	<u>List Price</u>
B	0.35	2,400	\$57,000
D	0.33	2,400	\$57,000
F	±0.33	2,400	\$57,000
G	±0.33	2,400	\$57,000
K	0.45	2,800	\$69,000
L	0.42	2,800	\$79,000
M	0.40	2,800	\$74,000
N	0.40	2,800	\$74,000



Angel's Pointe

- 15 luxury home sites along an intimate avenue
- One 2,484 sq. ft. home plan
- Decorative choices & upgrade options available

Available Properties

<u>Lot #</u>	<u>List Price</u>
SOLD OUT	

Seller financing available at 0% for 12 months.

Angel's Pointe Phase II. Must close by 12/31/2023.

Presented by



Kula Hoty Lynch
419.609.7000
kula@hoty.com

Prices are subject to change without notice. Contact Hoty Enterprises for current prices and incentives. Principals of owners are licensed agents.