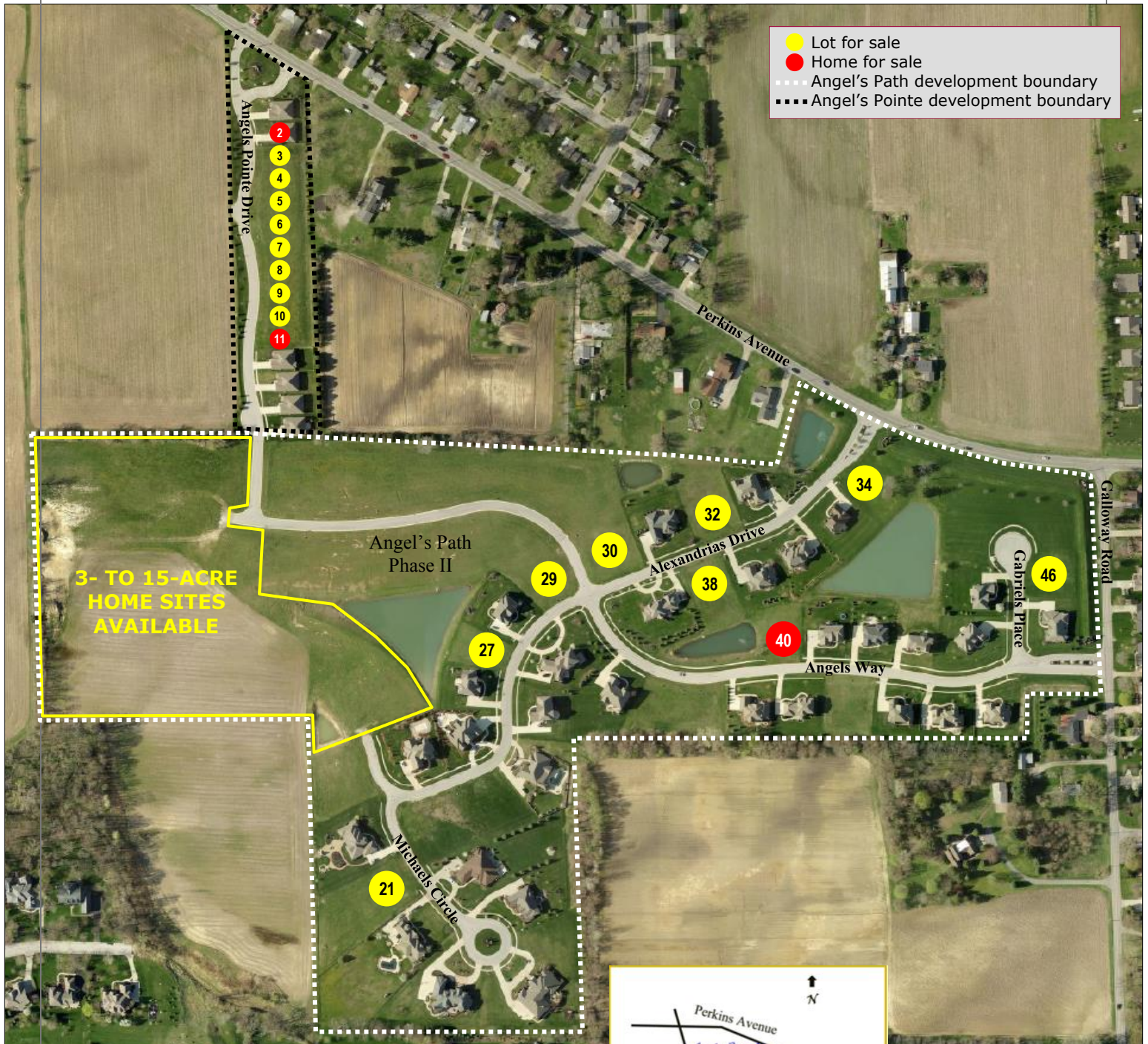
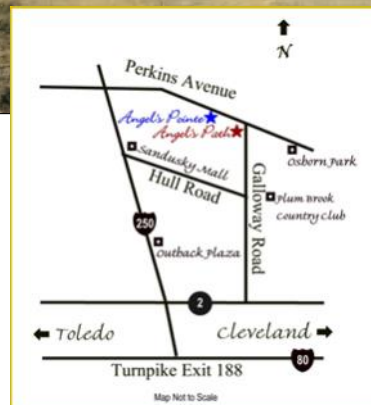


Angel's Path and Angel's Pointe

Premier Residential Communities in Perkins Twp., Ohio



- Lots and luxury homes for sale
- Architectural standards to protect your investment
- Perkins Township Schools
- Convenient access to highways
- Minutes from Osborn Park, Plum Brook Country Club and US 250 shopping and restaurant district



Presented by



Kula Hoty Lynch
 419-609-7000
 800-416-4689
 kula@hoty.com

Angel's Path and Angel's Pointe

Premier Residential Communities in Perkins Twp., Ohio

Angel's Path Features

- Lot sizes starting at 0.38 acre
- Private atmosphere
- Water views
- Beautiful common areas
- Distinctive homes

Angel's Pointe Features

- 15 luxury home sites set along an intimate avenue
- One 2,484 sq. ft. home plan
- Decorative choices and upgrade options available
- Private atmosphere



Contact us for...

- A personal tour of homes for sale
- Detailed explanation of building requirements
- Current lot prices and incentives

Presented by



Kula Hoty Lynch
419-609-7000
800-416-4689
kula@hoty.com

Angel's Path Lot Prices

<u>Lot #</u>	<u>Lot Acreage</u>	<u>Min. Sq. Ft. Home Size</u>	<u>List Price</u>
1			SOLD
2			SOLD
3			SOLD
4			SOLD
5			SOLD
6			SOLD
7			SOLD
8			SOLD
9			SOLD
10			SOLD
11			SOLD
12			SOLD
13			SOLD
14			SOLD
15			SOLD
16			SOLD
17			SOLD
18			SOLD
19			SOLD
20			SOLD
21	1.04	3,600	\$152,000
22			SOLD
23			SOLD
24			SOLD

<u>Lot #</u>	<u>Lot Acreage</u>	<u>Min. Sq. Ft. Home Size</u>	<u>List Price</u>
25			SOLD
26			SOLD
27	0.38	2,800	\$94,000
28			SOLD
29	0.51	3,000	\$94,000
30	0.52	3,000	\$84,000
31			SOLD
32			SOLD
33			SOLD
34	0.45	2,800	\$84,000
35			SOLD
36			SOLD
37			SOLD
38	0.46	2,800	\$84,000
39			SOLD
40	HOME FOR SALE	\$499,000	
41			SOLD
42			SOLD
43			SOLD
44			SOLD
45			SOLD
46	0.48	2,800	\$69,000
47			SOLD

October 29, 2013

Prices are subject to change without notice. Please contact Hoty Enterprises for current prices and incentives.