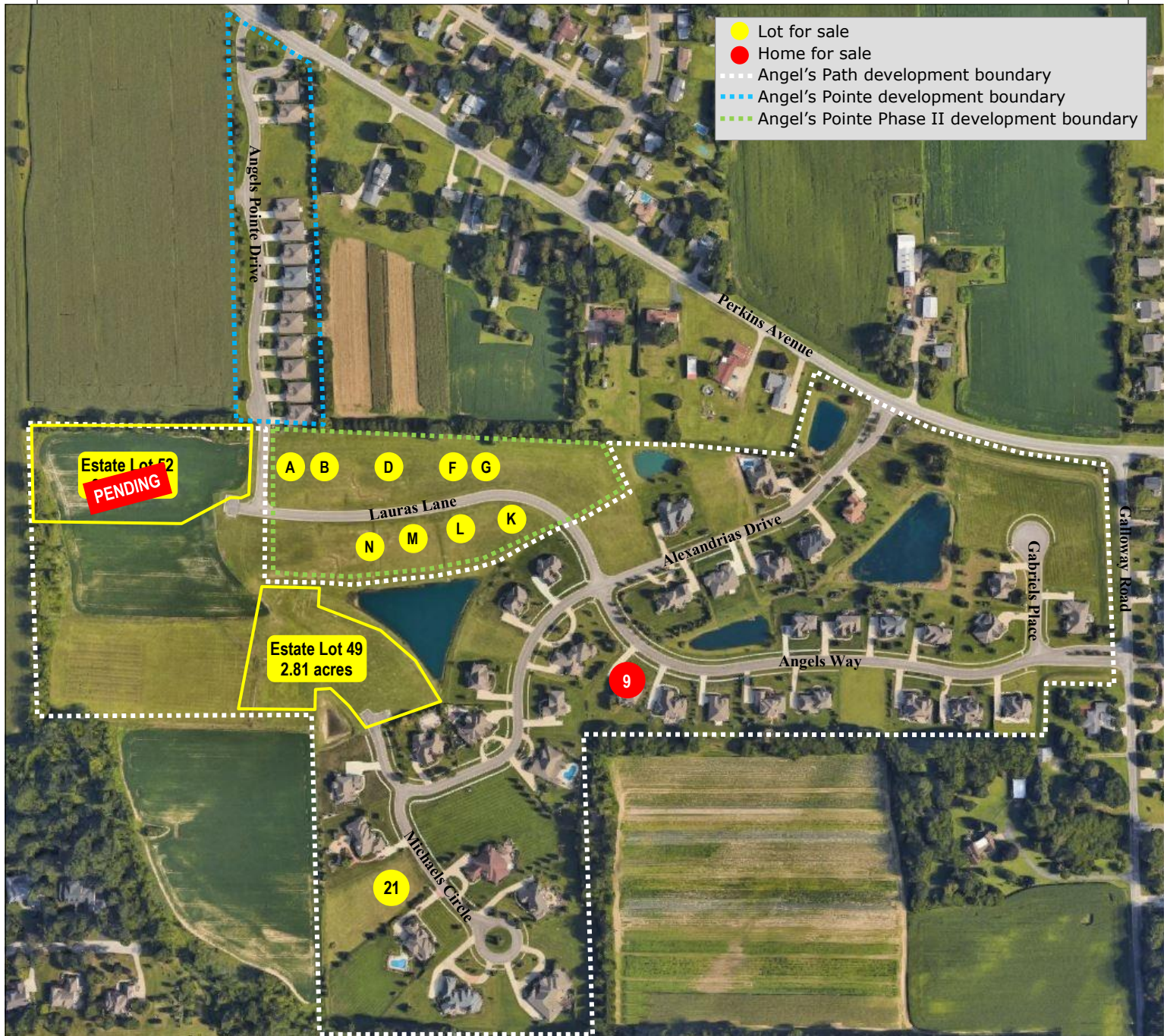


# Angel's Path | Angel's Pointe

Premier Residential Communities in Perkins Township, Ohio



- Lots and luxury homes for sale
- Architectural standards to protect your investment
- Perkins Township Schools
- Convenient access to highways
- Minutes from Osborn Park, Plum Brook Country Club and US 250 shopping and restaurant district

Developed by



Kula Hoty Lynch  
419.609.7000  
kula@hoty.com

# Angel's Path | Angel's Pointe

Premier Residential Communities in Perkins Township, Ohio



## Angel's Path

- Lots starting at 0.45 acre
- Distinctive homes
- Water views & beautiful common areas

### Available Properties

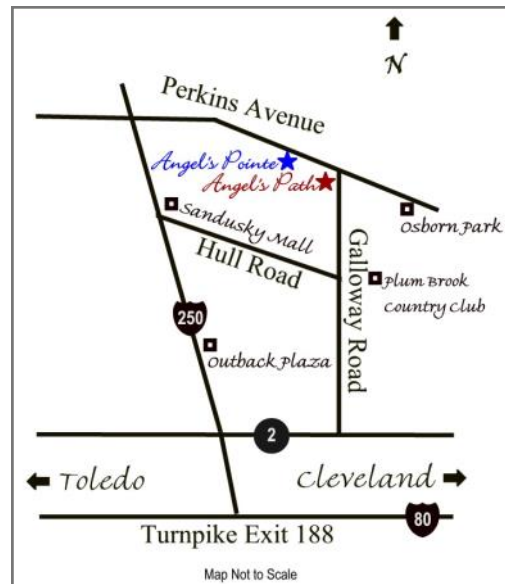
Lot #	Lot Acreage	Min. Sq. Ft. Home Size	List Price
9	4,800 SF HOME FOR SALE		\$675,000
21	1.04	3,600	\$159,000
49	2.81	3,600	\$159,000
52		IN CONTRACT	

## Angel's Pointe Phase II

- Lots starting at 0.33 acre
- Minimum home size of 2,400 sq. ft.
- Private atmosphere

### Available Properties

Lot #	Lot Acreage	Min. Sq. Ft. Home Size	List Price
A	0.52	2,400	\$54,000
B	0.35	2,400	\$49,000
D	0.33	2,400	\$51,000
F	±0.33	2,400	\$53,000
G	±0.33	2,400	\$55,000
K	0.45	2,800	\$69,000
L	0.42	2,800	\$79,000
M	0.40	2,800	\$79,000
N	0.40	2,800	\$79,000



## Angel's Pointe

- 15 luxury home sites along an intimate avenue
- One 2,484 sq. ft. home plan
- Decorative choices & upgrade options available

### Available Properties

Lot #	List Price
SOLD OUT	

Presented by



Kula Hoty Lynch  
419.609.7000  
kula@hoty.com

Prices are subject to change without notice.  
Contact Hoty Enterprises for current prices and incentives.  
Principals of owners are licensed agents.