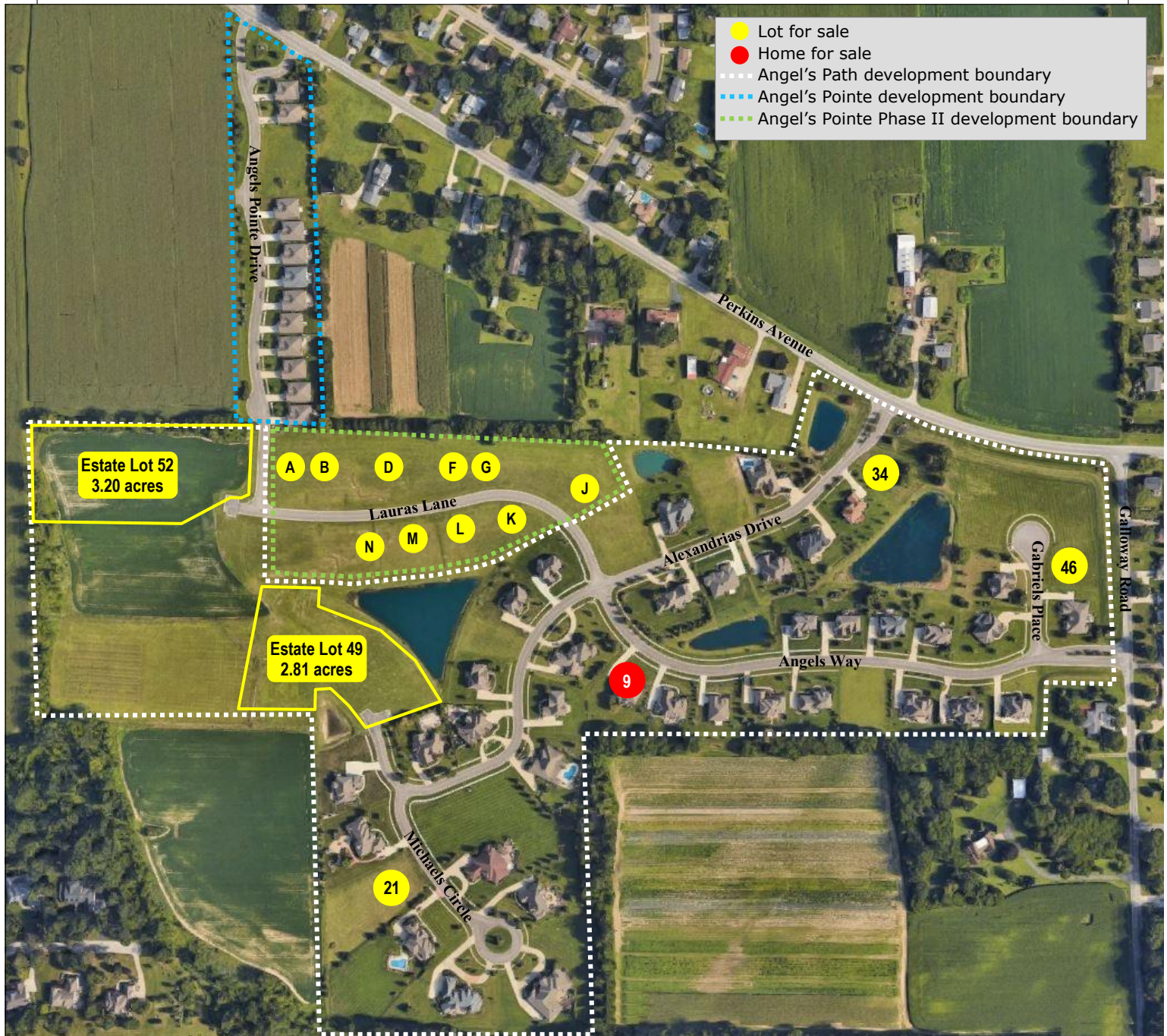


Angel's Path | Angel's Pointe

Premier Residential Communities in Perkins Township, Ohio



- Lots and luxury homes for sale
- Architectural standards to protect your investment
- Perkins Township Schools
- Convenient access to highways
- Minutes from Osborn Park, Plum Brook Country Club and US 250 shopping and restaurant district

Developed by



Kula Hoty Lynch
419.609.7000
kula@hoty.com

Angel's Path | Angel's Pointe

Premier Residential Communities in Perkins Township, Ohio



Angel's Path

- Lots starting at 0.45 acre
- Distinctive homes
- Water views & beautiful common areas

Available Properties

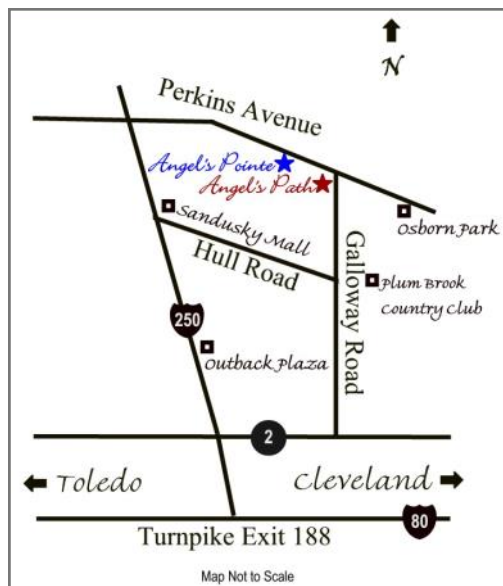
Lot #	Lot Acreage	Min. Sq. Ft. Home Size	List Price
9	HOME FOR SALE		\$689,000
21	1.04	3,600	\$152,000
34	0.45	2,800	\$84,000
46	SALE PENDING		\$59,000
49	2.81	3,600	\$159,000
52	3.20	3,600	\$139,000
54	0.40	2,800	\$69,000
55	0.40	2,800	\$79,000
56	0.40	2,800	\$79,000
57	0.40	2,800	\$79,000
58	0.42	2,800	\$79,000
59	0.45	2,800	\$79,000

Angel's Pointe

- 15 luxury home sites along an intimate avenue
- One 2,484 sq. ft. home plan
- Decorative choices & upgrade options available

Available Properties

Lot #	List Price
SOLD OUT	



Angel's Pointe Phase II

- Lots starting at 0.33 acre
- Minimum home size of 2,400 sq. ft.
- Private atmosphere

Available Properties

Lot #	Lot Acreage	Min. Sq. Ft. Home Size	List Price
A	0.52	2,400	\$54,000
B	0.35	2,400	\$49,000
D	0.33	2,400	\$51,000
F	±0.33	2,400	\$53,000
G	±0.33	2,400	\$55,000
J	±0.50	2,400	\$64,000
K	0.45	2,400	\$69,000
L	0.42	2,400	\$79,000
M	0.40	2,400	\$79,000
N	0.40	2,400	\$79,000

Presented by



Kula Hoty Lynch
419.609.7000
kula@hoty.com

Prices are subject to change without notice.
Contact Hoty Enterprises for current prices and incentives.
Principals of owners are licensed agents.