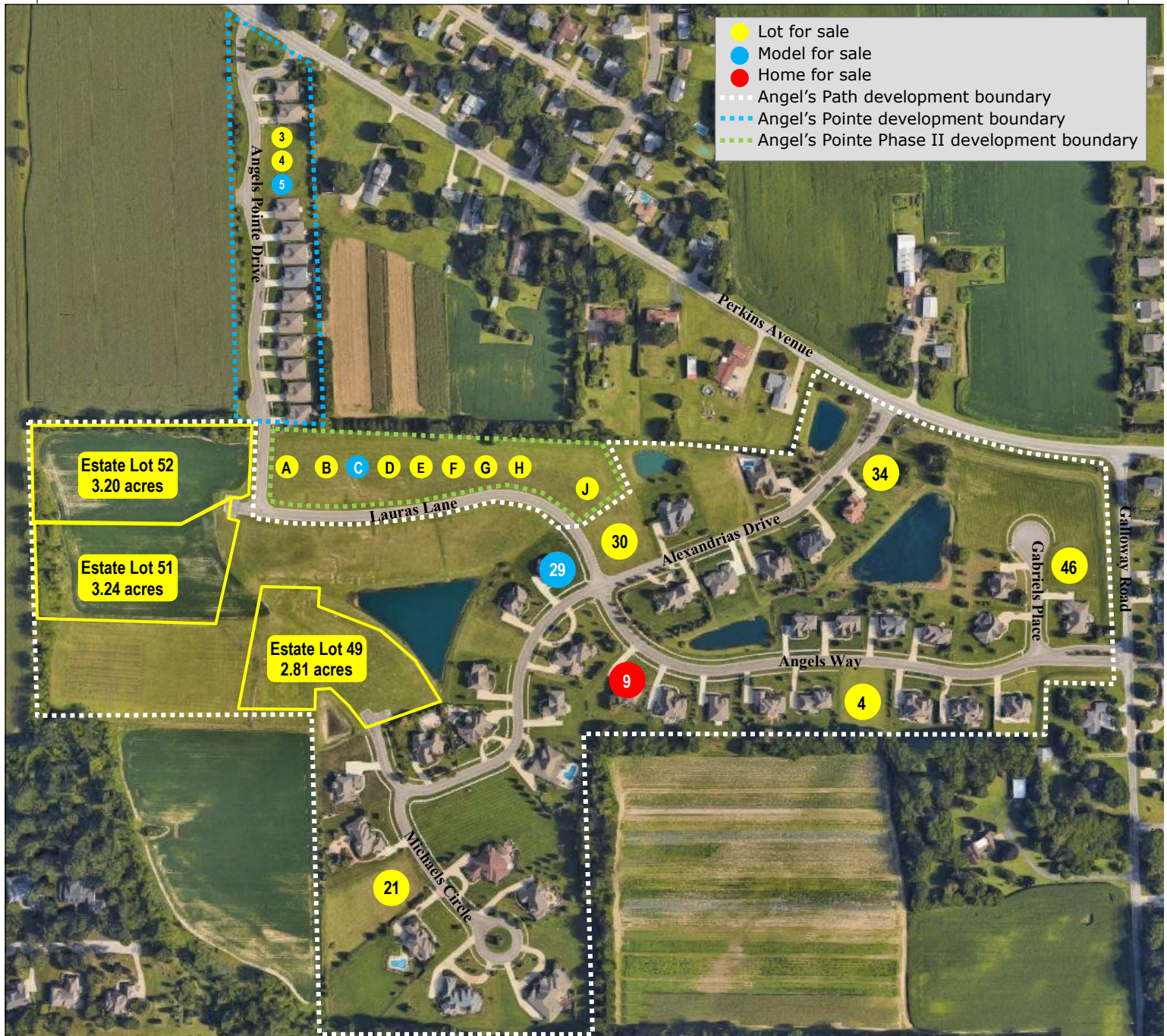


Angel's Path | Angel's Pointe

Premier Residential Communities in Perkins Township, Ohio



- Lots and luxury homes for sale
- Architectural standards to protect your investment
- Perkins Township Schools
- Convenient access to highways
- Minutes from Osborn Park, Plum Brook Country Club and US 250 shopping and restaurant district

Developed by



Kula Hoty Lynch
419.609.7000
kula@hoty.com

Angel's Path | Angel's Pointe

Premier Residential Communities in Perkins Township, Ohio

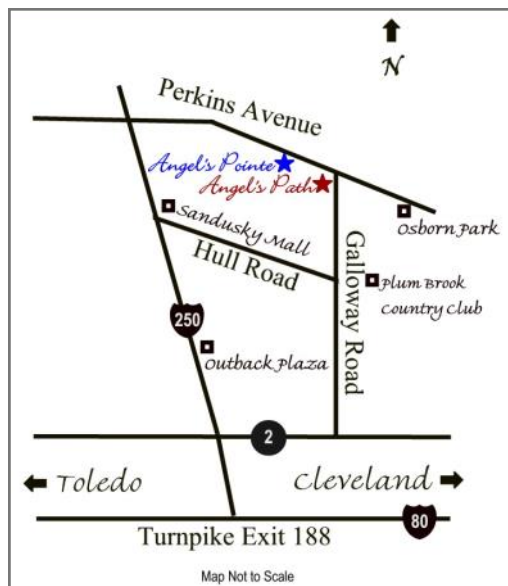


Angel's Path

- Lots starting at 0.38 acre
- Distinctive homes
- Water views & beautiful common areas

Available Properties

Lot #	Lot Acreage	Min. Sq. Ft. Home Size	List Price
4	0.55	3,000	\$54,900
9	HOME FOR SALE		\$689,000
21	1.04	3,600	\$152,000
29	MODEL HOME FOR SALE		\$509,000
30	0.52	3,000	\$84,000
34	0.45	2,800	\$84,000
46	0.48	2,800	\$59,000
49	2.81	3,600	\$159,000
51	3.24	3,600	\$149,000
52	3.20	3,600	\$139,000



Angel's Pointe

- 15 luxury home sites along an intimate avenue
- One 2,484 sq. ft. home plan
- Decorative choices & upgrade options available

Available Properties

Lot #	List Price
3	See Agent
4	See Agent
5	MODEL HOME FOR SALE \$319,000

Angel's Pointe Phase II

- Lots starting at 0.33 acre
- Minimum home size of 2,400 sq. ft.
- Private atmosphere

Available Properties

Lot #	Lot Acreage	Min. Sq. Ft. Home Size	List Price
A	0.52	2,400	\$54,000
B	0.35	2,400	\$49,000
C	MODEL HOME FOR SALE		\$399,900
D	0.33	2,400	\$51,000
E	±0.33	2,400	\$51,000
F	±0.33	2,400	\$53,000
G	±0.33	2,400	\$55,000
H	±0.33	2,400	\$57,000
J	±0.50	2,400	\$64,000

Presented by



Kula Hoty Lynch
419.609.7000
kula@hoty.com

Prices are subject to change without notice.
Contact Hoty Enterprises for current prices and incentives.
Principals of owners are licensed agents.